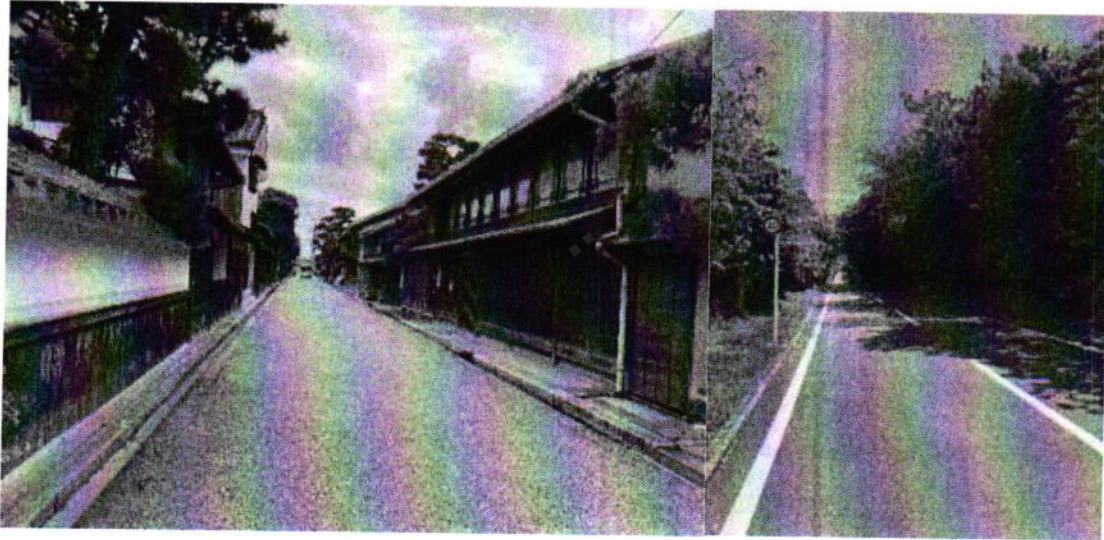


Knowledge Co-Creation Program (Group and Region Focus)

Road Asset Management



Course Number: 202515088J001

Course Period: July 27th to August 22th, 2026



NOTE: Adobe Acrobat Reader DC and Google Chrome are recommended as PDF viewer. JAWS and NVDA are recommended as screen reader.

NOTE: If there are any difficulties in reading this document, please contact JICA Office in your country or JICA Center in Japan.

NOTE: Depending on the circumstances, some or all of the program periods may be changed or cancelled after the application has been accepted.



How can we design sustainable and environmentally friendly roads and bridges?

Gain insights to the essence of
road asset management,
more practical, more interactive,
more inspirational
from the experiences of Japan.



Outline

The program is designed for mid-level engineers working in central or local governments, or in government-related organizations, who are responsible for road and bridge maintenance or road asset management.

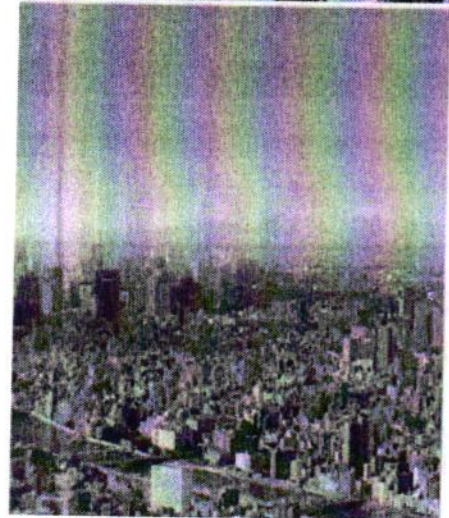
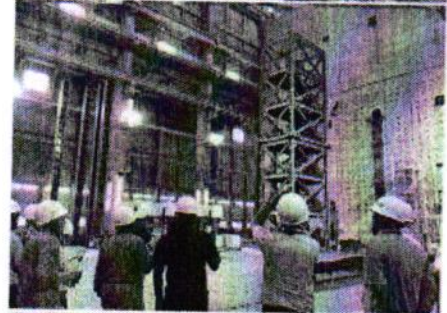
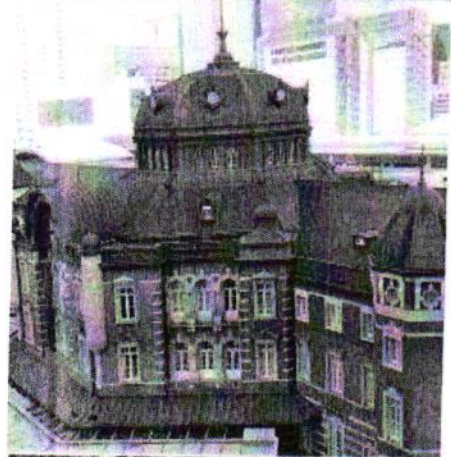
The program provides core lectures on asset management alongside practical training in the inspection, diagnosis, and data management of bridges, pavements, and other road structures. It also covers material reuse from pavements and concrete structures, human resource development, and road financing, with pavement-related sessions focusing specifically on paved roads.

The session will be conducted in Japan and will feature lectures, self-study, group discussions, practical exercises, and site visits.

All sessions will be carried out in English.

The period of the program is from July 27th to August 22th, 2026.

Course Capacity: 20 participants



JICA Knowledge Co-Creation Program (KCCP)

The Japanese Cabinet released the Development Cooperation Charter in June 2023, stated that “In its development cooperation, Japan has maintained the spirit of jointly creating things that suit partner countries while respecting ownership, intentions and intrinsic characteristics of the country concerned based on a field oriented approach through dialogue and collaboration. It has also maintained the approach of building reciprocal relationships with developing countries in which both sides learn from each other and grow and develop together.” We believe that this ‘Knowledge Co-Creation Program’ will serve as a foundation of mutual learning process.

TABLE OF CONTENTS

.....	OUTLINE
.....	3
FOR WHAT?	6
1. Background.....	6
2. Objectives	6
TO WHOM?	6
1. Job Areas and Organizations	6
2. Target Countries.....	6
WHEN?	7
Program Period(provisional).....	7
Location of the Program.....	7
HOW?	7
1. How to Learn.....	7
2. Language.....	7
3. Commitment to the SDGs.....	7
4. Program Structure	8
5. Implementing Partner, Coordinator, Program Officer.....	9
VOICE	10
ELIGIBILITY AND PROCEDURES	11
1. Expectations for Applying Organizations	11
2. Nominee Qualifications	12
3. Required Documents for Application	15
4. Application and Selection Procedure.....	15
5. For Accepted Applicants.....	16
6. Conditions for Participation	18
ADMINISTRATIVE ARRANGEMENTS	19
1. Organizer (JICA Center in Japan)	19
2. Implementing Partner.....	19
3. Expenses	19
4. Pre-departure Orientation.....	20
5. Reference.....	20
FOR YOUR REFERENCE	21
1. Concept of Road Asset Management (reference)	21
2. Introduction of other courses related to road maintenance (reference)	22
FOR YOUR REFERENCE	23
CORRESPONDENCE	25

For What?

1. Background

In recent years, due to increasing traffic volumes, population growth, and aging infrastructure, the cost of maintaining transportation systems has risen significantly.

Against this backdrop, road asset management has emerged as an effective decision-making tool to minimize costs and optimize future investments.

2. Objectives

[Overall Goal]

This course is designed to provide participants with knowledge and enhance their skills in basic asset management, with a focus on pavement and bridges.

[Expected Outputs]

- 1) Understand the current state of road assets and maintenance management practices in Japan.
- 2) Understand the status of road asset management initiatives in Japan, including human resource development and research and development efforts, and acquire technologies and knowledge applicable to participants' home countries.
- 3) Understand the characteristics and types of damage in road structures and learn how to manage them using inspection data.
- 4) Gain knowledge and techniques necessary for road asset management, enabling participants to develop appropriate maintenance and management plans.
- 5) Be capable of planning the necessary steps to implement road asset management in their country.

To Whom?

1. Job Areas and Organizations

This program is designed for mid-level engineers working in central or local governments, or government-related organizations responsible for road asset management. It is particularly beneficial for those involved in the inspection, diagnosis, data management, and supervision of road infrastructure, including both bridges and pavements, as the course places a strong emphasis on these topics through lectures, discussions, and exercises.

Although the course focuses primarily on bridges and pavements as case studies, it is equally valuable for those involved in the management of tunnels, and other road structures. The principles and techniques covered are designed to be applicable across a wide range of infrastructure types.

The applying organization with the best intention to utilize the opportunity of this program will be highly valued in the selection.

2. Target Countries

20 Countries

(Malaysia, Philippines, Cambodia, Laos, Timor-Leste, Bangladesh, Nepal, Pakistan, Samoa, Nicaragua, Türkiye, Egypt, Ethiopia, Eritrea, Uganda, Tanzania, Zambia, Côte d'Ivoire, Mozambique, Democratic Republic of the Congo)

*Additional participants from countries not listed may also be accepted.

A certificate will be awarded by JICA to participants who successfully complete the program.

When?

Program Period(provisional)

From July 27th to August 22th, 2026

Prior to the departure, online pre-orientation will be held as follows.

Date: June 9th June 10th, 2026

Time: 10:00am-12:00am JST

5:00pm-7:00pm JST

(Keep both dates available)

*See page 16 for details.

Where?

Location of the Program

The course will be conducted mainly in Tokyo, but participants will also visit Nagasaki and Tsukuba for lectures, site visits, and practical training.

How?

1. How to Learn

- Self-Study
- Interactive Q&A Session
- Lectures
- Site Visit
- Workshops
- Group Discussions
- Presentation

2. Language

English

3. Commitment to the SDGs



4. Program Structure

Preliminary Phase in a participant's home country: June & July 2026

Modules	Activities
Preparatory Work (Before Departure)	<ul style="list-style-type: none"> - Attendance at Pre-orientation Session - Submission of Country Report - Completion of Questionnaires - Viewing of Video Lectures (recommended)

Core Phase, Program in Japan : July 27 to August 22, 2026

Modules	Subjects
(1) Report Presentation	<ul style="list-style-type: none"> - Country Report (in the beginning of the program) Sharing and discussing road assets and maintenance management issues in your country. - Action Plan (at the end of the program) Applying problem analysis method (Lecture provided) Proposing new challenges and action plan
(2) Road Asset Management	<ul style="list-style-type: none"> - Core Lecture on Road Asset Management - Introduction to Pavement & Bridge Management - Road & Bridge Management and Data Utilization
(3) Organizational/budget/DB system	<ul style="list-style-type: none"> - Road Funding & Japan's Road Administration System - Knowledge Transfer for Road Asset Management - Human Resources Development for Infrastructure Management and Maintenance - Road AM Data Analysis Practice (Exercise)
(4) Maintenance	<ul style="list-style-type: none"> - Introduction to Performance-Based Contracts - Maintenance of Pavement & Concrete/Steel Bridges
(5) Inspection/diagnosis	<ul style="list-style-type: none"> - Introduction to Pavement & Bridge Inspection - Pavement Inspection Data Analysis (Exercise) - Bridge Inspection & Diagnosis (Exercise)
(6) Repair/plan/construction	<ul style="list-style-type: none"> - Technical Information on Pavement Engineering - Equipment and Materials for Maintenance & Repair - Soundness Evaluation & Deterioration Prediction

Final Phase in your Home Country : August 2026 to October 2026

Modules	Activities
Back-to-the-office Reporting	<ul style="list-style-type: none"> - Share and discuss what you learned in Japan with your superior(s) as well as your colleges, including a presentation of Action Plan.

5. Implementing Partner, Coordinator, Program Officer

Implementing Partner



Mr. OKA Toshiyuki
Mr. Lin Tianyang
Mr. SHIMADA Kazuya
Ms. KIMOTO Sarina



Infrastructure Development Institute-Japan (IDI)

Message: We at IDI, are pleased to offer a comprehensive and practical program on road asset management, based on feedback accumulated over the past several years. The program includes lectures by Japan's leading professors in this field, as well as site visits showcasing the latest Japanese technologies.

We believe that the many insights gained through this program will contribute to finding solutions for your country's road asset management challenges.



Dia Nippon Engineering Consultants Co., Ltd.

Ms. MATSUBAYASHI Sachiyo
Mr. NAGASAWA Gentaro



Dia Nippon Engineering Consultants Co., Ltd. (DNE)

Message: Our organization, DNE, will do our best to support this program as a professional group of civil engineering consultants. We are looking forward to seeing you in Japan!

Coordinator

(To be determined) Has extensive experience in coordinating the Knowledge Co-Creation Program (KCCP), and has been the Program Coordinator for many courses in the field of infrastructure.

Program Officer



Ms. KATO Kozue
Japan International Cooperation Agency (JICA)
Infrastructure Management Department



Message: We are planning some exciting on-site program this year. We ensure that you can learn a lot from our experienced lecturers as well as other participants all around the world. I hope you will gain as many experience and knowledge as possible during your stay in Japan. We look forward to seeing you in Japan!



Ms. KUITA Kanae
Japan International Cooperation Agency (JICA)
Tokyo Center



Message: In our program, you will learn not only Japanese experiences but also the situations and experiences of other participating countries.

Hope this program will be fruitful for you and your country! We are looking forward to meeting you!

VOICE

Past Program Alumni Comments

Ex-participant from Road Asset Management, 2025

This course offers a very rich combination of lectures, exercises, and site visits, so I recommend approaching it with an open mind and a willingness to learn from both theory and practice. It is helpful to review your own country's road and bridge management challenges before the program begins, as this will make the discussions and exercises more meaningful.



I would advise next year's participants to actively engage in discussions, exercises, and site visits, as these provide the most practical insights. It is also helpful to think in advance about how the concepts can be adapted to your own country's conditions, rather than focusing only on advanced technologies.

I gained a lot of valuable information from this tour and saw the high level of development in laboratory quality works, inspection activities, and emergency maintenance in Japan. I will transfer this knowledge to my work so that we can develop our capabilities in inspection and maintenance processes.



Learning how it is generally done in Japan is very interesting, because it gives me the opportunity to compare it with the quality control methods used in my country.

Eligibility and Procedures

1. Expectations for Applying Organizations

(1) Utilizing the Program to Solve Identified Organizational Challenges

This course is primarily intended for organizations aiming to address specific issues or challenges identified within their operations. Participants are expected to utilize the program to acquire knowledge and skills that can be applied to address those challenges, both during the training in Japan and after returning to their own organization. Upon their return, they are encouraged to contribute to solving real-world issues in their organizations and countries. Participation in this course is not the end, but rather the starting point for ongoing action and continuous improvement.

(2) Tailored Content Co-developed with Leading Japanese Institutions

The course offers enriched content and facilitation methods developed in collaboration with prominent organizations in Japan. These unique features are designed to meet the specific needs of applying organizations and to effectively support them in finding solutions to their identified issues.

2. Nominee Qualifications

Applying organizations are expected to nominate candidates who meet the following qualifications:

【Remarks】 Each Organizations is requested to strongly encourage female candidates to apply for the course to accelerate the realization of gender equality and women' s empowerment.

Disabilities: Persons with disabilities who meet the required qualifications also have an opportunity to apply. Reasonable accommodations will be considered for participants with disabilities. Some programs of the course might have difficulty for persons with disabilities to participate due to environmental and other conditions. "Reasonable accommodation" means necessary and appropriate modification and adjustments not imposing a disproportionate or undue burden, where needed in a particular case.

(1) Essential Qualifications

1) Experiences (Current Duties)

Mid-level engineers (with approximately 3 to 5 years of experience in inspection and diagnosis within the road maintenance sector), currently working at central or local governments or government-related organizations responsible for road asset management.

Applicants must be able to understand and collect the necessary information to prepare three reports – the Country Report, Achievement Level Evaluation, and Action Plan – based on the actual condition of road maintenance in their respective countries. If needed, applicants should seek support from the relevant road maintenance division.

Please describe your job experience in as much detail as possible. This information is a key factor in the candidate screening process.

Example: "2 years of experience in road maintenance inspection at XX Organization."

2) Educational Background:

A university degree (or equivalent) in civil engineering or a related field.

3) Language Proficiency:

Applicants are expected to have a high level of proficiency in both spoken and written English, enabling them to express their thoughts clearly and engage in discussions or respond to questions without the need for interpretation or language support.

If available, please attach official certificates indicating your English

proficiency.

4) Health Condition:

Participant must be in good health to participate in the program in Japan. Participant's health and safety should be most respected. Pre-existing conditions and pregnancy may lead to health problems that were not present prior to arriving in Japan due to stress from international travel, changes in climate, and a new living environment. In recent years, regrettable cases have occurred, including the exacerbation of symptoms after arrival and, in the case of pregnancy, stillbirth. Some participants have also incurred substantial out of pocket medical costs. If any of the conditions below may apply, please take a moment to consider whether to participate, and continue after confirming your agreement to the points below.

① Questionnaire ("QUESTIONNAIRE ON MEDICAL STATUS AND RESTRICTION")

If any of the following apply, you must state them accurately in the questionnaire, even if they do not affect your current work or daily life.

- a. Chronic diseases (e.g., hypertension, diabetes)
- b. Conditions currently under treatment
- c. Past illnesses that have resolved (including serious conditions affecting the heart, liver, or brain; tuberculosis, etc.)
- d. Pregnancy (for female applicants)

② Medical certificate

Please submit a medical certificate issued by a doctor that your condition is stable and that, from a medical standpoint, there is no problem with your participation in KCCP in Japan.

Applicable cases:

- a. Chronic diseases (e.g., hypertension, diabetes)
- b. Conditions currently under treatment
- c. Past illnesses that have resolved (including serious conditions affecting the heart, liver, or brain; tuberculosis, etc.)

③ Reporting changes

If pregnancy or any health issues are identified after submitting the form, please report them to JICA promptly.

④ Insurance coverage

Medical and additional living expenses related to pregnancy and pre-existing conditions are NOT covered by insurance arranged by JICA. Such costs must

be borne entirely by the participant; JICA assumes no liability.

* Please understand that insurance coverage applies only to sudden illness or injury occurring during your stay in Japan.

* Medical expenses in Japan could be a significant financial burden when not covered by insurance.

(2) Recommended Qualifications

1) Age:

In principle, applicants should be 40 years old or younger.

2) Gender Equality and Women's Empowerment:

JICA seeks more female applicants due to the past records of fewer applications from women. JICA is committed to promoting gender equality and women's empowerment, and provides equal opportunities for all applicants regardless of their sexual orientation or gender identity.

(3) Technical Requirements

1) Technology Proficiency

Basic computer skills are required. Participants are also expected to be self-directed and capable of learning new technologies, such as GIS, as needed.

2) Hardware (Minimum Requirement)

- ✓ Regular access to a computer with webcam, microphone, and audio output, either from your home or office, is required for the pre-orientation session.
- ✓ While JICA can provide a laptop if absolutely necessary, participants are strongly expected to bring their own device for use during the program in Japan.
- ✓ Minimum Specifications;
Operating System: Windows or macOS (latest version preferred)
Processor: Intel Core 2 Duo or higher; 2 GHz or faster
Memory (RAM): 4 GB or more
Storage: At least 5 GB of free disk space
Web Browser: Google Chrome is recommended (Edge, Firefox, and Safari are also acceptable)

3) Software

- ✓ Zoom Client for Meetings: <https://zoom.us/download>
- ✓ Microsoft Office (Word, PowerPoint, Excel)

3. Required Documents for Application

(1) Application Form

The application form is available at the JICA overseas office or the Embassy of Japan.

(2) Photocopy of Passport or Official Identification

If you possess a passport, please submit a photocopy. If not, submit a copy of another official identification document.

(3) English Proficiency Test Score (if available)

If the nominees have any official English examination scores. (e.g., TOEFL, TOEIC, IELTS)

4. Application and Selection Procedure

(1) Submission of the Application Documents

Please confirm the local deadline for application submission with the JICA overseas office or the Embassy of Japan.

*All required documents must arrive at the JICA Tokyo by **May 05** , 2026.*

(2) Selection

Primary screening is conducted at the JICA overseas office (or the embassy of Japan) after receiving official documents from your government. JICA Center will consult with concerned organizations in Japan in the process of final selection. Applying organizations with the best intentions to utilize the opportunity will be highly valued.

The Government of Japan will examine applicants who belong to the military or other military-related organizations and/or who are enlisted in the military, taking into consideration of their duties, positions in the organization and other relevant information in a comprehensive manner to be consistent with the Development Cooperation Charter of Japan.

(3) Notice of Acceptance

The JICA overseas office (or the Embassy of Japan) will notify the results not later than **June 1, 2026**.

5. For Accepted Applicants

(1) Pre-orientation(provisional)

Date: June 9th and 10th, 2026

Time: 10:00am- 12:00am or 5:00pm- 7:00pm (Japan Standard Time, UTC+09:00)

Accepted applicants will be invited to attend a pre-orientation session (approximately 1 hour) via Zoom.

Please join the session on either June 9th or 10th.

If you are unavailable on both dates, please inform the secretariat (roadam2020@idi.or.jp) of your availability as soon as possible.

The Zoom link will be shared in due course.

(2) Preparation for Presentation

At the beginning of the program, all participants are required to deliver a 10-minute presentation of their Country Report using Microsoft PowerPoint (PPT). Please refer to the next page for the required contents.

Participants must use the designated template to create their action plans, which will be shared by the secretariat at a later date.

Further instructions for preparing the PowerPoint presentation will be provided to accepted applicants after the Notice of Acceptance.

(3) Contents Expected in Country Reports

Participants are expected to have experience related to the following topics and be able to describe them independently in their Country Reports.

1) Background

Contents	Details
Work Experience in Your Organization	Planning & Design, Construction work, Cost estimate, Maintenance
Work Experience in Road Maintenance	Inspection, Diagnosis, Repair, Budget planning

2) Organization overview

Contents	Details
Organization Chart	-
Number of Personnel	Total number of staff, including employment status (e.g., engineers, technicians).
Budgetary State	1) Ministry 2) Road Department 3) Construction & Major Rehabilitation 4) Maintenance 5) Funding sources (e.g., internal: government fund/loan; external: grant/loan)
Road Network and Assets	Provide a road network map under your organization's jurisdiction Total road length managed by your organization Number of bridges (bridge length \geq 2m) under your jurisdiction

3) Current status and issues of maintenance

Contents	Details
Overview of Current Status of Road Assets	Include photos and a brief description of current road asset conditions
Achievement Level Evaluation of Road AM	Use a radar chart to assess the status of road asset management Indicate the best/worst areas and explain why
Standards/Manual	Describe existing standards/manuals and how they are used
Database of Inspection and Diagnosis Results	Provide figures/photos showing databases of inspection and repair work
Bidding Contract System	Describe your country's public procurement and bidding/contract system

4) Topics of Road Asset Management in Your Country

Contents	Details
Financial Initiatives	Describe current financial initiatives related to road asset management
Human Resource Development	Describe initiatives for capacity building and staff development
Policy for Road Asset Management	Provide an overview of relevant policies or strategic initiatives

5) Current Problem/Issue/Challenges in Road Asset Management

Contents	Details
Three Most Important Issues	List and explain the top three challenges you believe need improvement

6) Resolutions

Contents	Details
Training goals	Your training objectives and the specific knowledge or skills you aim to acquire through this seminar
Knowledge you Aim to Acquire	

6. Conditions for Participation

The participants of KCCP are required

- (1) to strictly observe the course schedule,
- (2) not to change the air ticket (and flight class and flight schedule arranged by JICA) and lodging by the participants themselves,
- (3) to understand that leaving Japan during the course period (to return to home country, etc.) is not allowed (except for programs longer than one year),
- (4) not to bring or invite any family members (except for programs longer than one year),
- (5) to carry out such instructions and abide by such conditions as may be stipulated by both the nominating Government and the Japanese Government in respect of the course,
- (6) to observe the rules and regulations of the program implementing partners to provide the program or establishments,
- (7) not to engage in political activities, or any form of employment for profit,
- (8) to discontinue the program, should the participants violate Japanese laws or JICA's regulations, or the participants commit illegal or any type of immoral conduct including sexual harassment, or get critical illness or serious injury and be considered unable to continue the course. The participants shall be responsible for paying any cost for treatment of the said health conditions except for the medical care stipulated in (3) of "3.Expenses", "Administrative Arrangements",
- (9) to return the total amount or a part of the expenditure for the KCCP depending on the severity of such violation, should the participants violate the laws and ordinances,
- (10) not to drive a car or motorbike, regardless of an international driving license possessed,
- (11) to observe the rules and regulations at the place of the participants' accommodation, and
- (12) to refund allowances or other benefits paid by JICA in the case of a change in schedule.
- (13) to promptly notify JICA in the case that there are any changes in the health status since the time of application (such as changes requiring medical attention due to illness or discovery of pregnancy).
- (14) Please note that during this training program, photos and videos may be taken for publicity purposes, and such materials may be used in press releases and other public relations media.

Administrative Arrangements

1. Organizer (JICA Center in Japan)

JICA Tokyo Center (JICA TOKYO)

<https://www.jica.go.jp/tokyo/english/office/index.html>

Program Officer: KUITA Kanae (Ms.) / Contact: ticttee@jica.go.jp

2. Implementing Partner

(1) Infrastructure Development Institute - Japan (IDI)

http://www.idi.or.jp/en/about_us/aisatu/

(2) Dia Nippon Engineering Consultants Co., Ltd. (DNE)

<https://www.dcne.co.jp/english/business/>

3. Expenses

The following expenses in Japan will be provided by JICA

- (1) Allowances for meals, living expenses, and stopover.
- (2) Expenses for study tours (basically in the form of train tickets).
- (3) Medical care for participants who become ill after arriving in Japan (the costs related to pre-existing illness, pregnancy, or dental treatment are not included).
- (4) Expenses for program implementation, including materials.
- (5) For more details, please see "III. ALLOWANCES" of "KENSHU-IN GUIDE BOOK," (English/French/Spanish/Russian).

*Link to the Website:

https://www.jica.go.jp/english/activities/schemes/tech_pro/acceptance_training/forparticipants.html

<https://jica-van-cms.jica.go.jp/custom/kccp/kccp01.html>

4. Pre-departure Orientation

A pre-departure orientation will be held at the JICA office (or the Japanese Embassy), to provide Participants with details on travel to Japan, conditions of the course, and other matters.

Part I: Knowledge Co-Creation Program and Life in Japan	
English ver.	https://www.youtube.com/watch?v=SLurfKugrEw
French ver.	https://www.youtube.com/watch?v=v2yU9lSYcTY
Spanish ver.	https://www.youtube.com/watch?v=m7l-WlQSDjl
Russian ver.	https://www.youtube.com/watch?v=P7_ujz37AQc
Arabic ver.	https://www.youtube.com/watch?v=1iBQqdpXQb4
Part II: Introduction of JICA Centers in Japan	
JICA Tokyo	https://www.jica.go.jp/tokyo/english/office/index.html

If the link of these YouTube URLs has expired, please access the URL below and search the necessary information from the key word.
<https://www.youtube.com/user/JICAChannel02>

5. Reference

KENSHU-IN GUIDEBOOK

For more detailed terms and conditions
<https://jica-van-cms.jica.go.jp/custom/kccp/kccp01.html>

Video: JICA Predeparture Briefing

For more information on life in Japan and KCCP
<https://jica-van-cms.jica.go.jp/custom/kccp/kccp01.html>

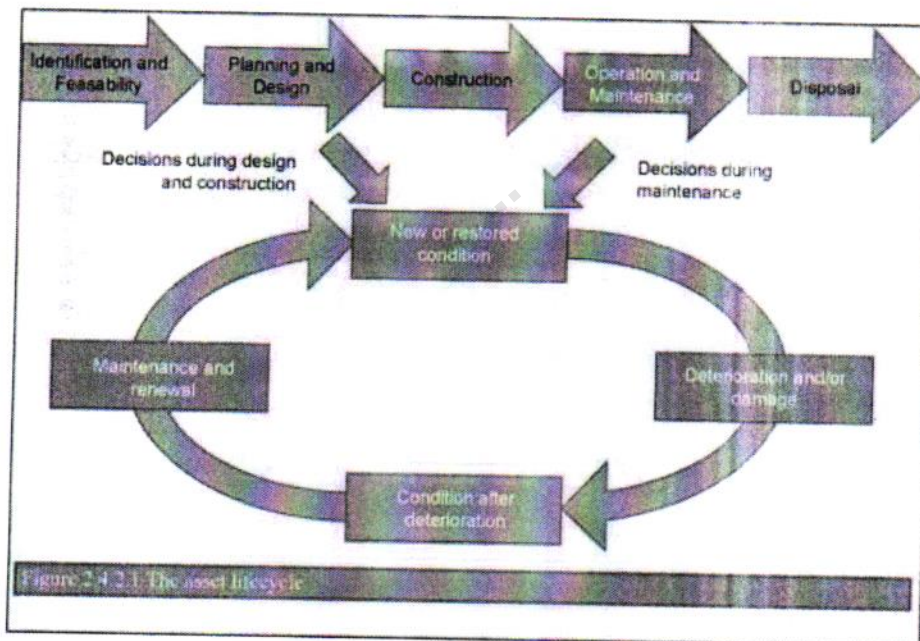
Facility Guide for JICA Tokyo Center (PDF)

https://www.jica.go.jp/Resource/tokyo/english/office/c8h0vm0000fghcxq-att/facilities_service_guide.pdf

For Your Reference

1. Concept of Road Asset Management (reference)

To make your learning in this program more effective, it is recommended that you understand the concept of the maintenance cycle and its key components in advance.

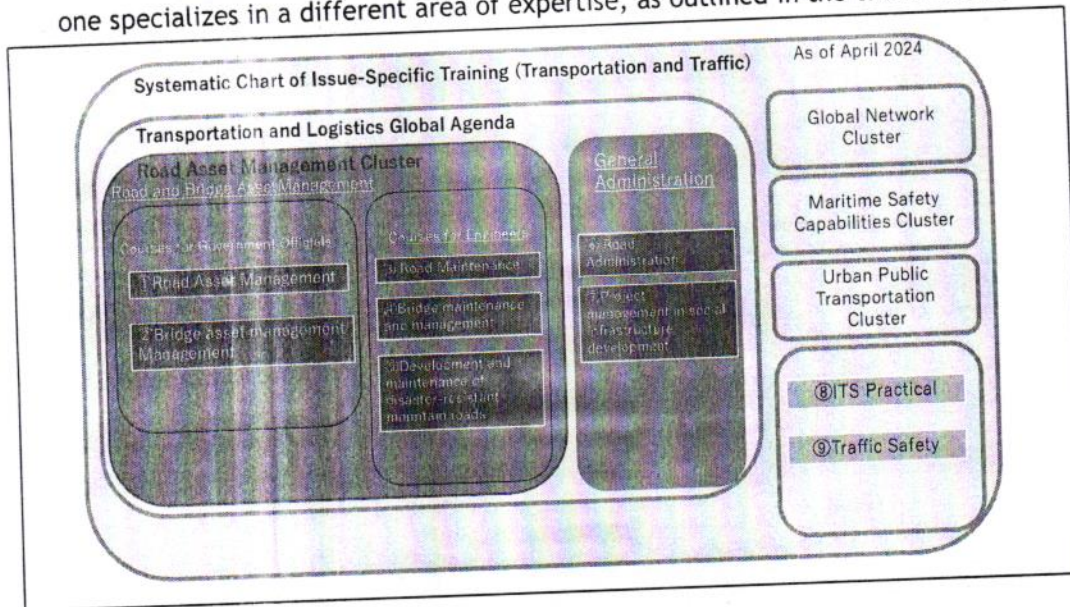


[Figure 1] The Asset Lifecycle (PIARC)

For more details, please visit the URL below.

<https://road-asset.piarc.org/en/data-and-modeling-lifecycle-planning/lifecycle-planning>

2. Introduction of other courses related to road maintenance (reference)
 JICA is currently offering seven KCCP programs in the field of road maintenance and management. When applying for any of these courses, please note that each one specializes in a different area of expertise, as outlined in the table below.



[Figure 2] Other Courses Related to Road Maintenance

[Table 1] JICA KCCP in Road Maintenance and Management

Course Name	Course Outline
Road Administration	This course aims to enhance the capacity of administrative officials in road planning, operation, maintenance, and maintenance management.
Project Management in infrastructure Development for Civil Engineers	Designed for senior administrative officials (or candidates) involved in social infrastructure development, this course covers project management, contracting systems, supervision, inspection, project evaluation, and accountability in Japan.
Road Asset Management	This is the course you are currently applying for.
Bridge Asset Management	This course focuses on asset management, financial planning, and data collection/utilization, particularly in the context of bridge maintenance and management.
Comprehensive Bridge Engineering (For Bridge Engineers)	This course provides comprehensive training on bridge technology, including design, construction and supervision, and maintenance practices.
Road Maintenance	This course is designed to develop efficient road maintenance planning. Multiple versions are offered, each tailored to regional characteristics—ranging from cold to tropical climates.
Development and maintenance of Resilient Roads in Mountainous Regions with Disaster Risk	Aimed at technical staff, this course focuses on building capacity in risk assessment and slope stability analysis for mountain roads prone to disasters.

For Your Reference

JICA and Capacity Development

Technical cooperation is people-to-people cooperation that supports partner countries in enhancing their comprehensive capacities to address development challenges by their own efforts. Instead of applying Japanese technology per se to partner countries, JICA's technical cooperation provides solutions that best fit their needs by working with people living there. In the process, consideration is given to factors such as their regional characteristics, historical background, and languages. JICA does not limit its technical cooperation to human resources development; it offers multi-tiered assistance that also involves organizational strengthening, policy formulation, and institution building.

Implementation methods of JICA's technical cooperation can be divided into two approaches. One is overseas cooperation by dispatching experts and volunteers in various development sectors to partner countries; the other is domestic cooperation by inviting participants from developing countries to Japan. The latter method is the Knowledge Co-Creation Program, formerly called Training Program, and it is one of the core programs carried out in Japan. By inviting officials from partner countries and with cooperation from domestic partners, the Knowledge Co-Creation Program provides technical knowledge and practical solutions for development issues in participating countries.

The Knowledge Co-Creation Program (Group & Region Focus) has long occupied an important place in JICA operations. About 400 pre-organized courses cover a wide range of professional fields, ranging from education, health, infrastructure, energy, trade and finance, to agriculture, rural development, gender mainstreaming, and environmental protection. A variety of programs is being customized by the different target organizations to address the specific needs, such as policy-making organizations, service provision organizations, as well as research and academic institutions. Some programs are organized to target a certain group of countries with similar developmental challenges.

Japanese Development Experience

Japan, as the first non-Western nation to become a developed country, built itself into a country that is free, peaceful, prosperous and democratic while preserving its tradition. Japan will serve as one of the best examples for our partner countries to follow in their own development.

From engineering technology to production management methods, most of the know-how that has enabled Japan to become what it is today has emanated from a process of adoption and adaptation, of course, has been accompanied by countless failures and errors behind the success stories.

Through Japan's progressive adaptation and application of systems, methods and technologies from the West in a way that is suited to its own circumstances, Japan has developed a storehouse of knowledge not found elsewhere from unique systems of organization, administration and personnel management to such social systems as the livelihood improvement approach and governmental organization. It is not easy to apply such experiences to other countries where the circumstances differ, but the experiences can provide ideas and clues useful when devising measures to solve problems.

JICA, therefore, would like to invite as many leaders of partner countries as possible to come and visit us, to mingle with the Japanese people, and witness the advantages as well as the disadvantages of Japanese systems, so that integration of their findings might help them reach their developmental objectives.

This information pertains to one of the JICA Knowledge Co-Creation Programs (Group & Region Focus) of the Japan International Cooperation Agency (JICA) implemented as part of the Official Development Assistance of the Government of Japan based on bilateral agreement between both Governments.



Correspondence

For enquiries and further information, please contact the JICA office or Embassy of Japan.

Further, address correspondence to:

JICA Tokyo Center (JICA Tokyo)

Address: 2-49-5, Nishihara, Shibuya-ku, Tokyo 151-0066, Japan

TEL: +81-3-3485-7051 FAX: +81-3-3485-7904

("81" is the country code for Japan, and "3" is the local area code)